

Fast Facts

\$1.24B
FY18
Total Revenue

6K
Employees

30 Year
Heritage of
Innovation



To be the leader in unleashing **industrial innovation** that occurs at the convergence of the physical, digital, and human worlds

PTC'S DIGITAL TRANSFORMATION SOLUTION SUITE





creo®

Creo is the industry's leading **3D CAD Software**, a scalable, interoperable suite of applications that allows product designers to get results quickly. Creo's flagship capabilities include: 2D, 3D, parametric & direct CAD modeling complemented by newer tools for concept design, simulation, additive manufacturing, model-based definition, and augmented reality.



windchill®

Windchill is **Product Lifecycle Management (PLM) software** that offers comprehensive capabilities to help manufacturers manage their products through all phases of the product lifecycle. The PTC PLM software system manages all aspects of the product development lifecycle, from concept through service and retirement.



The Vuforia **AR platform** uses advanced computer vision technology to enable digital content to be placed in real-world environments. With support for handheld and head-worn devices, Vuforia includes easy-to-use workflows, SDKs, and cloud services for Unity and other leading development tools.



ThingWorx is the industry-leading, award-winning **Industrial Internet of Things (IIoT) technology platform** from PTC. It contains a broad set of features, including a variety of connectivity options, application development tools, analytics, and augmented reality all built around a single, real-time view of a physical object in the digital world - the Thing Model.



Onshape is the only **Software-as-a-Service (SaaS) product development platform** that combines CAD, built-in data management, real-time collaboration tools, and business analytics. By connecting all your stakeholders in one unified and secure cloud workspace, your product development team can spend more time designing and less time being blocked by file-based software headaches.



Arena Solutions is an industry leading **SaaS product lifecycle management (PLM) platform**, capable of managing highly complex bills of materials (BOMs) and compliance with quality standards and regulatory requirements across the electronics, high tech, and medical device industries. Seamlessly delivered via the cloud, Arena Solutions' customers can track, manage, and share product information from engineering to manufacturing, and across an extended supply chain

LARGE VARIETY OF SOLUTIONS CUSTOMERS



Aerospace & Defense



Automotive



High Tech



Industrial



Retail & Consumer



Medical Devices



OUR CULTURE

Power To Create

Our Values:



**Customer
First**



**Brains, Passion
& Fun**



**PTC For
All**



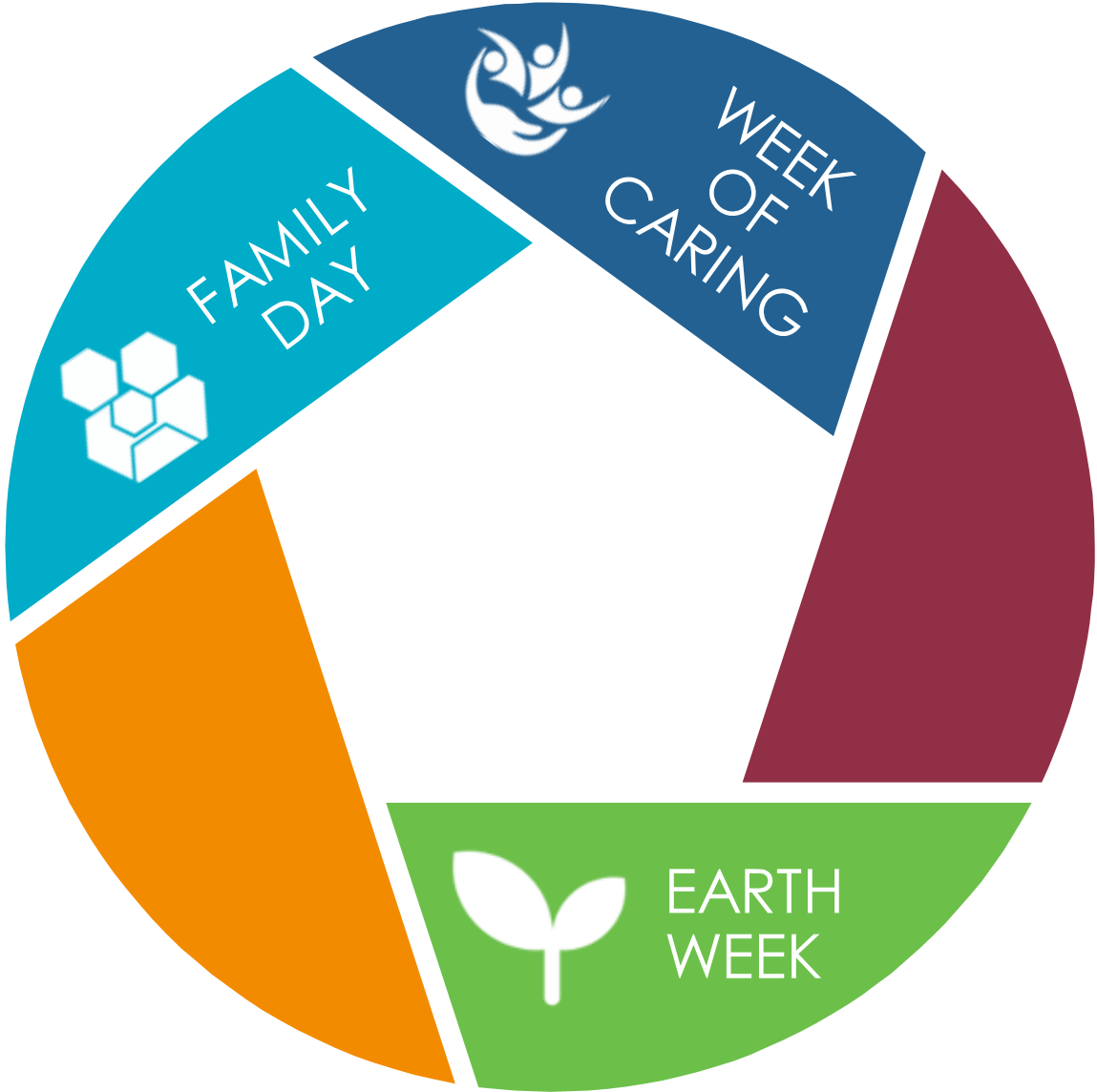
**Excellence &
Innovation**



**Boldness
& Agility**

PTC COMMUNITY CONNECTIONS

PTC employees are passionate about giving back





Happy Birthday!



Family Day



High Velocity Sales



Sales Compliance

“When you join PTC Barcelona, you become part of the PTC Family!”

- Annika Kruse, High Velocity Sales Director



Christmas Party

PTC Socials are an opportunity for employees to network with their colleagues in an informal setting and enjoy some social time to unwind.

PTC BENEFITS



23 Days Paid Time Off
Birthday Off
Parental Leave



Social Fridays
Family Day
Week of Caring
Earth Week
Summer Fridays



Private Healthcare
Life Assurance
Injury Assurance
Referral Bonus
Employee Stock Purchase Plan
Luncheon Voucher
House Agency Fees Discount
Flexible Benefits

CAREERS

PTC BARCELONA DEPARTMENTS

High Velocity Sales (Inside Sales)

Technical Presales

Renewals Sales

License Compliance

Sales Enablement

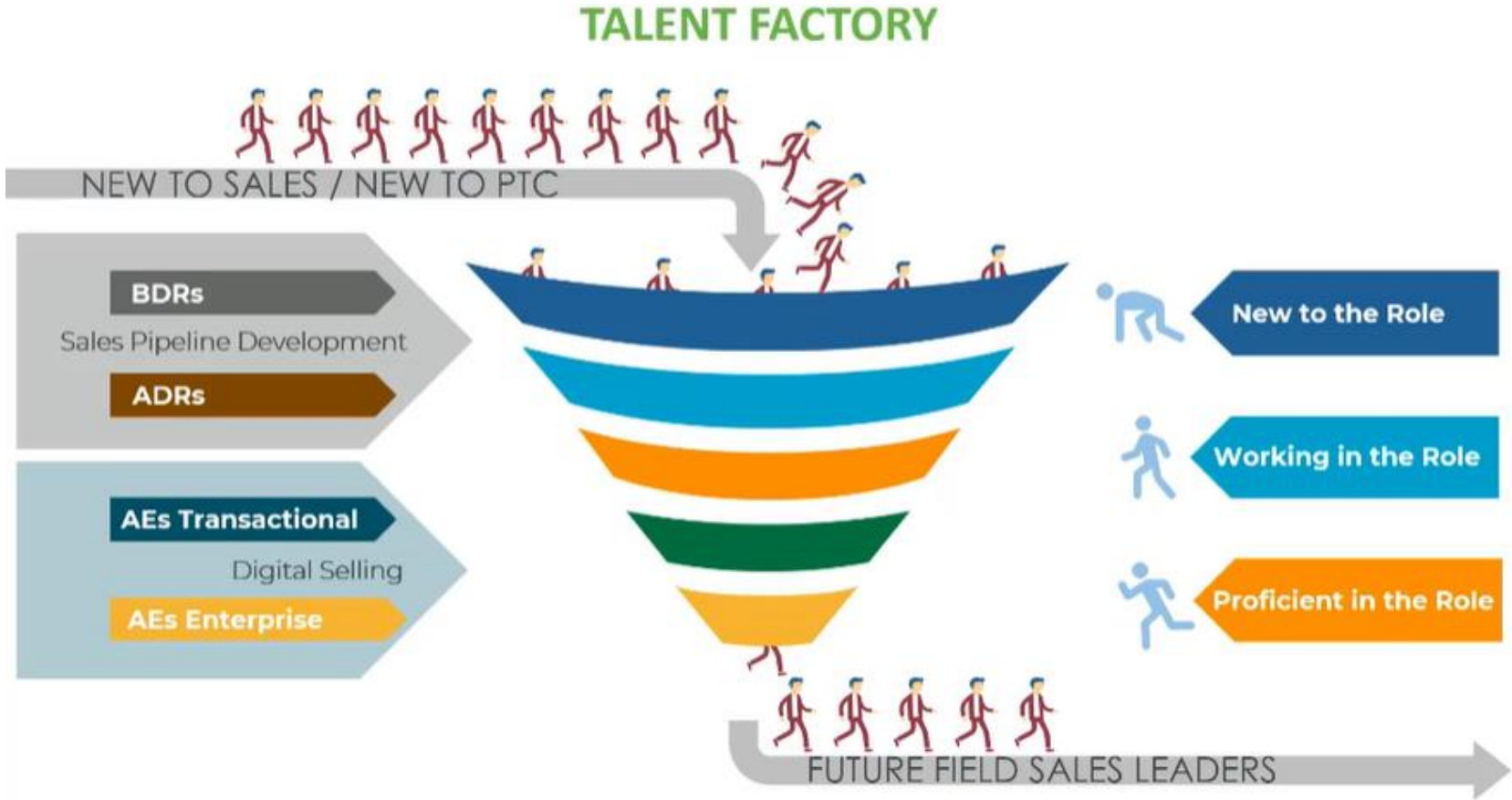
Partner Management

Human Resources & Talent Acquisition

HIGH VELOCITY SALES



OUR VISION: To be the cutting-edge **leader** in digital pipeline generation and **sales**, at the same time as **developing future sales leaders**.



- ✓ COACHING
- ✓ INNOVATION
- ✓ FAST CAREER PATH



When it's time to make a
change, make it a great one.

INTERESTED IN JOINING PTC?

Check out [ptc.com/careers](https://www.ptc.com/careers) and our LinkedIn page